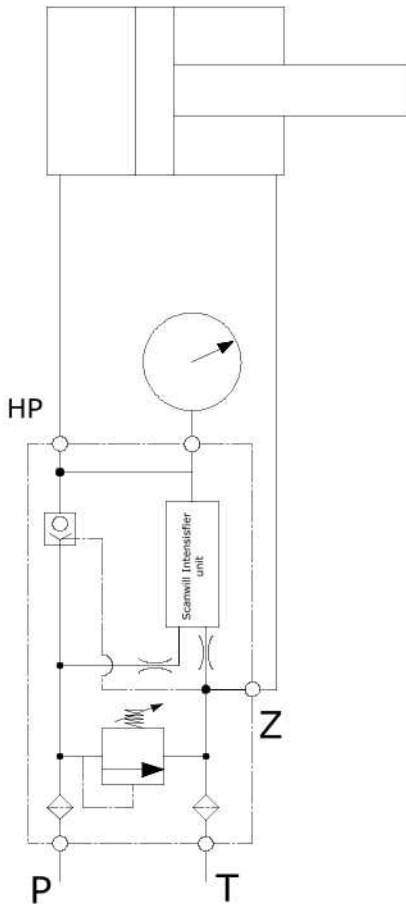


Scanwill Intensifier Solution Series SIS-34

Technical Data:

| | |
|-------------------------|---|
| Inlet flow: | Min. 5 LPM to max. 100 LPM |
| Inlet pressure: | Min. 10 bar to max. 200 bar* * Depending on the ratio |
| Outlet Pressure: | Variable 50 to 800 bar** **Depending on the chosen ratio and setting of the inlet pressure |
| Connections: | G3/8" all ports |
| Materials: | Cast iron & steel Available in stainless steel |
| Filtration requirement: | Min. 10 micron nominal 200 micron strainers integrated |



Connecting the SIS-34

Before installing make sure the surroundings and connecting parts are clean.

- P: To be connected to pump supply
- T: To be connected to tank line
- Z: To be connected to the low pressure side of the cylinder
- HP: To be connected to the high pressure side of the cylinder

The SIS-34 Range:

| Ratio | Max. inlet pressure (bar) | Max. outlet pressure (bar) | Product code |
|-------|---------------------------|----------------------------|--------------|
| 1,8:1 | 200 | 360 | SIS-34-1.8 |
| 2.1:1 | 200 | 420 | SIS-34-2.1 |
| 2.6:1 | 200 | 520 | SIS-34-2.6 |
| 3.4:1 | 200 | 680 | SIS-34-3.4 |
| 4.0:1 | 200 | 800 | SIS-34-4.0 |
| 5.0:1 | 160 | 800 | SIS-34-5.0 |
| 7.0:1 | 114 | 800 | SIS-34-7.0 |

