

# PARALLEL-LIFTING DEVICE HYLA-LIFT

**Non-canted lifting  
of tool tops even with  
extremely unequal  
weight distribution  
or damaged columns.**



**Representative in North America:  
IC-Fluid Power, Inc.  
63 Dixie Hwy.  
Rossford, OH 43460  
[www.icfluid.com](http://www.icfluid.com) +1.419.661.8811**

  
**HYLATECHNIK**

# Parallel-lifting device HYLA-LIFT

**HYLA-LIFT parallel-lifting device replaces sledge hammer and crowbar, saves working time and protects tool guides.**

## Function:

Four lifting cylinders are hydraulically dosed for exact parallel motion. Unequal cylinder loads (for instance by uneven weight distribution or friction) do not cause a noticeable stroke discrepancy.

Unequal distances between tool top and base are equalised with the adjustment screws. Longer separating strokes then the actual cylinder stroke allows are achieved by repeated lifting and supporting action.



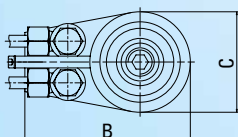
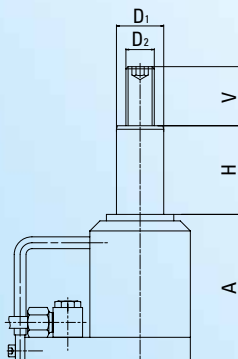
## Scope of supply:

- HYLA-LIFT transportation carriage
- Hydraulic unit
- Dosing unit for parallel motion
- Spring loaded hose reels
- Four lifting cylinders with flexible hoses
- Electric control with hand set – „Inching“ circuit for UP and DOWN motion
- Optional: stroke extension kit

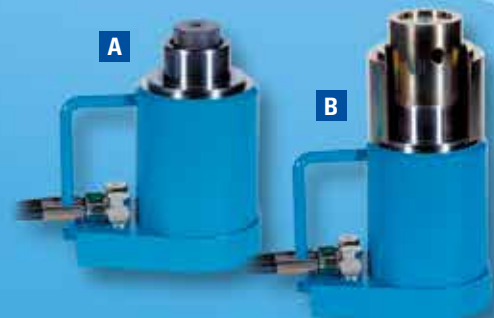
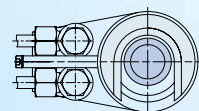
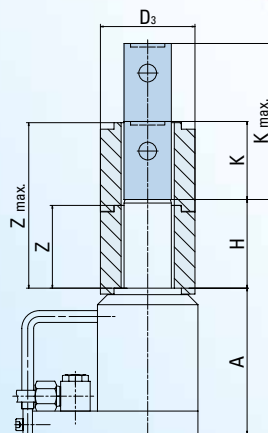
## Standard-types

Type	PGHD				
	10/50	10/75	10/100	30/75	40/75
A	99	124	149	149	149
B	140	140	140	153	173
C	Ø 85	Ø 85	Ø 85	Ø 105	Ø 125
D <sub>1</sub>	Ø 40	Ø 40	Ø 40	Ø 55	Ø 60
D <sub>2</sub>	M 24 x 3	M 24 x 3	M 24 x 3	Tr 38 x 4	Tr 38 x 4
H stroke	50	75	100	75	75
V adjustment	50	65	65	70	70
D <sub>3</sub>	80	80	80	95	95
K / K <sub>max</sub>	41 / 82	66 / 132	91 / 182	66 / 132	66 / 132
Z / Z <sub>max</sub>	45 / 90	70 / 140	95 / 190	70 / 140	70 / 140
no. of cylinders	4			4	
lifting force kN	4 x 25 100	4 x 25 100	4 x 25 100	4 x 75 300	4 x 100 400
power rating kW	2.1			2.1	
operating voltage	400 V, 50 Hz other voltages on request				
hose length mm	4000			7000	
total weight (approx.) kg	410	415	420	530	550
weight p. cylinder (approx.) kg	4.5	5.5	6.5	9	13.5

**A** Lifting cylinder with adjustment screw



**B** Lifting cylinder with extension kit



**Hylatechnik · Paul Chrubasik GmbH**  
D-74360 Ilsfeld · Robert-Mayer-Str. 7  
Tel. +49 (0) 70 62 90 57-0 · info@hylatechnik.de  
<http://www.hylatechnik.de>